

## Digital Undercounter Refrigerated Counter Saladette - 250lt, 2 Doors (R290)

ITEM # \_\_\_\_\_

MODEL # \_\_\_\_\_

NAME # \_\_\_\_\_

SIS # \_\_\_\_\_

AIA # \_\_\_\_\_


**725106 (PTR259)**

 2-door refrigerated Pizza  
Preparation Table with  
marble top 250lt, +2+10°C,  
AISI 304

### Short Form Specification

#### Item No. \_\_\_\_\_

Constructed entirely in 304 AISI stainless steel. Marble top. Can accommodate 5 GN 1/6 containers. High-density expanded polyurethane foam, 50 mm in thickness, with cyclopentane injection. Height-adjustable feet. Lower refrigerated compartment designed to accommodate GN 1/1 containers and equipped with N. 2 hinged doors. Built-in refrigeration unit. Ventilated. Refrigerant R290. Digital control panel. Automatic evaporation of defrost water. Drain outlet. Suitable to operate in ambient temperatures up to +43°C. Temperature range: +2+10°C. CFC and HCFC free.

### Main Features

- Adjustable temperature range from 2 °C to 10 °C to suit meat, fish and dairy storage requirements.
- Forced air circulation for rapid cooling and an even temperature distribution.
- Automatic evaporation of defrost water. Prearrangement for drain outlet.
- Connectivity ready for real time access to connected appliances from remote and data monitoring (requires optional accessory).
- Digital control panel.
- Anti-tilt runners accept GN 1/1 containers.
- Marble worktop suitable for 5 GN 1/6 containers.

### Construction

- IPX3 protected.
- Access to all components from the front.
- Built-in compressor to suit operating conditions.
- Constructed from AISI 304 Stainless steel throughout to meet the highest hygiene standards.
- Developed and produced in ISO 9001 and ISO 14001 certified factory.
- Mounted on legs with height adjustment.
- Rounded internal corners for ease of cleaning.

### Sustainability



- CFC and HCFC free, highly ecological refrigerant type: R290 (ecological gas in foam: cyclopentane). Hydrocarbon refrigerant gas R290 for the lowest environmental impact (GWP=3), to reduce green house and ozone depletion effects.
- 50 mm insulation for energy saving.

### Optional Accessories

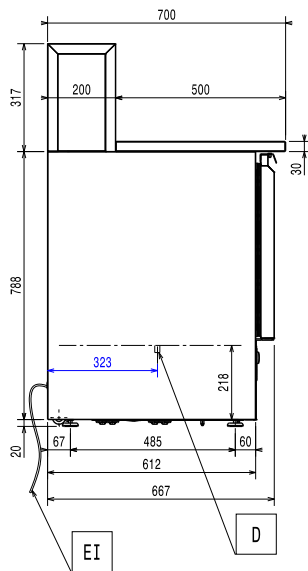
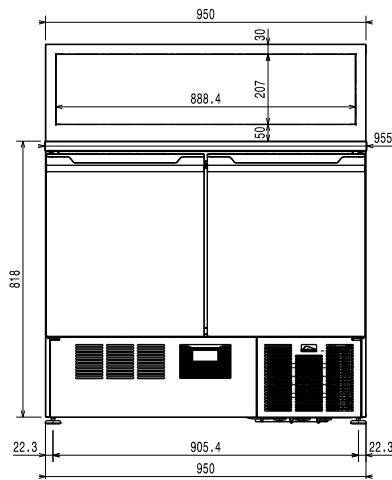
- 1/1GN grey rilsan grid PNC 881435 ☐

APPROVAL: \_\_\_\_\_

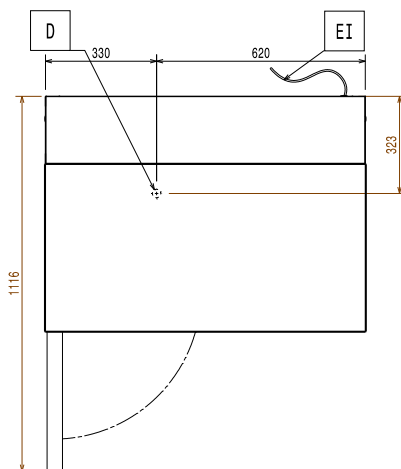


**Electrolux**  
PROFESSIONAL

## Digital Undercounter Refrigerated Counter Saladette - 250lt, 2 Doors (R290)



EI = Electrical inlet (power)



### Electric

Supply voltage:

725106 (PTR259)

220-240 V/1 ph/50 Hz

### Key Information:

Gross capacity:

250 lt

Net Volume:

140 lt

Door hinges:

1 Left+1 Right

**Built-in Compressor and Refrigeration Unit**

External dimensions, Width:

950 mm

External dimensions, Depth:

700 mm

External dimensions, Height:

1125 mm

Depth with doors open:

1120 mm

Height adjustment:

0/0 mm

### Refrigeration Data

Compressor power:

1/5 hp

### ISO Certificates

ISO Standards:

ISO 9001; ISO 14001; ISO  
45001; ISO 50001

### Sustainability

Refrigerant type:

R290

Refrigeration power:

253 W

Refrigerant weight:

50 g



Digital Undercounter  
Refrigerated Counter Saladette - 250lt, 2 Doors (R290)

The company reserves the right to make modifications to the products  
without prior notice. All information correct at time of printing.

2024.05.19